



Zebrafish Models in Translational Medicine

MEETING

Courcelles-sur-Yvette, France, October 2-4, 2013

Sessions and Speakers

Plenary lecture:

Jesus Benavides, Former director of CNS drug discovery at Sanofi.
Consultant in Translational Research.

Developmental and psychiatric disorders:

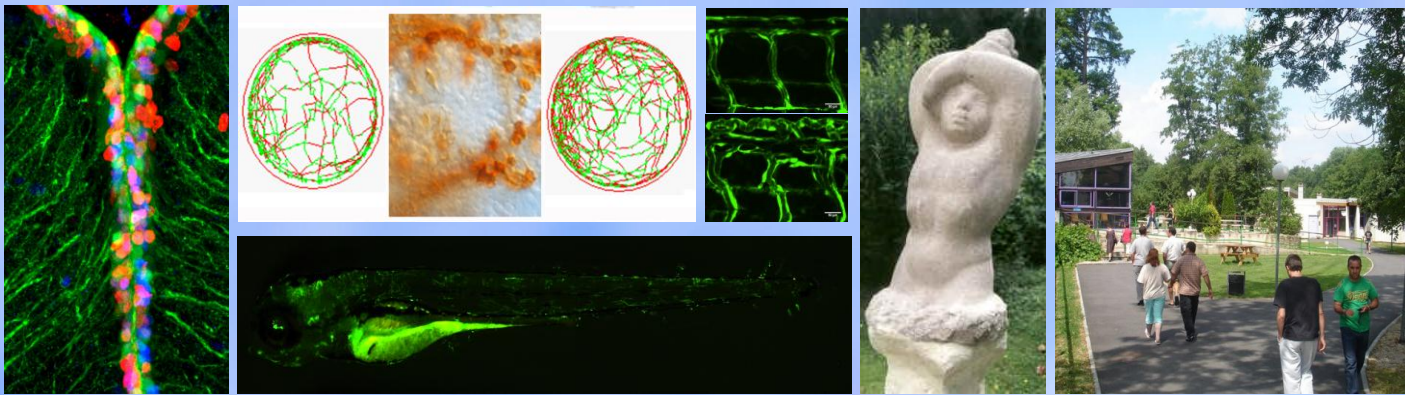
Maria Karayiorgou (Columbia U. NY)
Klaus-Peter Lesch (U. of Würzburg)

Cancer:

Giuseppe Testa (IEO, Milan)
Jean Soulier (UIH, Paris)
Lionel Larue (Inst. Curie, Orsay)

Metabolic diseases:

Patricia Munroe (WHRI, London)
Domenico Accili (Columbia U. NY)
Peter Ratcliffe (Oxford U.)



Abstract and registration deadline 31/07/13

Enquiries: jana.maier@kit.edu

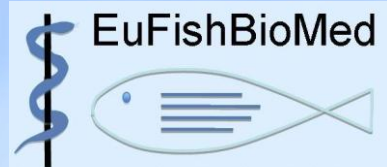
Organisers;

Francesco Argenton (University of Padua)
Laure Bally-Cuif (CNRS, Gif-sur-Yvette)
Marina Mione (KIT, Karlsruhe)
Frédéric Rosa (INSERM, Paris)
Freek van Eeden (University of Sheffield)



ZF-HEALTH

Zebrafish Regulomics for Human Health



European network on Fish Biomedical Models