



# Zebrafish Models in Translational Medicine

## MEETING

Courcelles-sur-Yvette, France, October 2-4, 2013

### Sessions and Speakers

#### Plenary lecture:

Jesus Benavides, Former director of CNS drug discovery at Sanofi.  
Consultant in Translational Research.

#### Cancer:

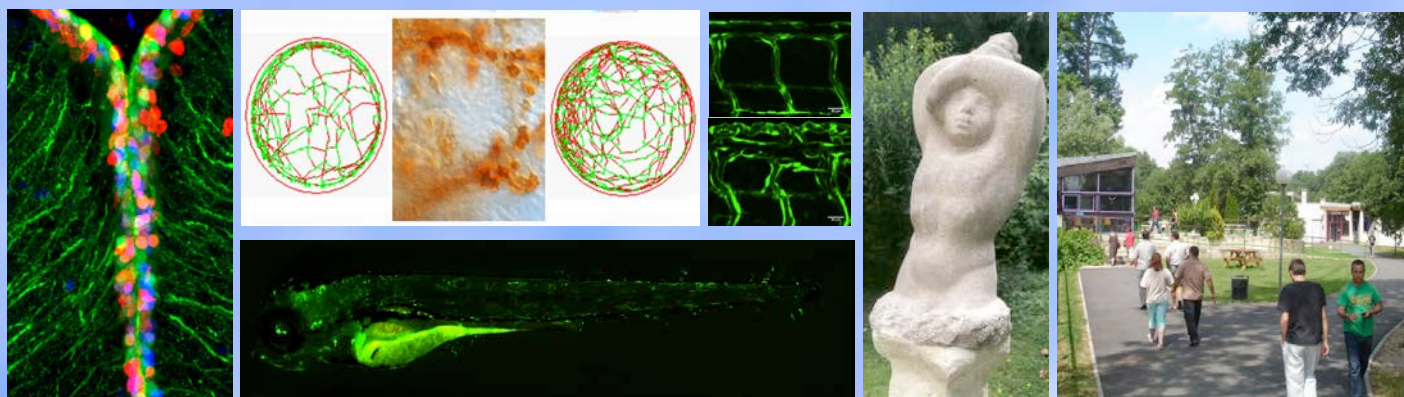
Giuseppe Testa (IEO, Milan)  
Jean Soulier (UIH, Paris)  
Lionel Larue (Inst. Curie, Orsay)

#### Developmental and psychiatric disorders:

Maria Karayiorgou (Columbia U. NY)  
Stéphane Jamain (I. Henri Mondor, Créteil)  
Klaus-Peter Lesch (U. of Würzburg)

#### Metabolic diseases:

Patricia Munroe (WHRI, London)  
Domenico Accili (Columbia U. NY)  
Peter Ratcliffe (Oxford U.)



Registration and abstract submission via <http://vero.bif.kit.edu/zmtm/welcome.php>

Abstract and registration deadline 31/07/13

Enquiries: [jana.maier@kit.edu](mailto:jana.maier@kit.edu)

#### Organisers:

Francesco Argenton (University of Padua)  
Laure Bally-Cuif (CNRS, Gif-sur-Yvette)  
Marina Mione (KIT, Karlsruhe)  
Frédéric Rosa (INSERM, Paris)  
Freek van Eeden (University of Sheffield)



# ZF-HEALTH

Zebrafish Regulomics for Human Health

